



# LEDko EXT FullSpectrum

## KEY FEATURES

- LED profile spot IP 65
- RGBLA color mixing
- CCT proportional control from 2.700 to 6.500 K (CRI > 85)
- IP rating: 65 (weatherproof)
- Profile zoom from 17° to 38°
- Four blade framing system and internal gobo holder
- Electronic 16 bit dimming with 3 selectable curves (Exponential, Logarithmic and Linear)
- Fan setting with 2 different options (auto, DMX)
- Guaranteed flicker-free



## SPECIFICATIONS

- RGBLA color mixing with hue and saturation control
- CCT: all whites from 2.700 to 6.500 K
- IP rating: 65 (weatherproof)
- Profile zoom from 17° to 38°
- Four blade framing system, each shutter blade is adjustable for radial position and angle
- Internal gobo holder (standard gobo size B)
- Electronic 16 bit dimming with 3 selectable curves (exponential, logarithmic, linear)
- Pulse electronic strobe
- Flicker-free operation with LEDs frequency controlled via DMX from 600 to 19.000 Hz
- Fan setting with 2 different options (auto, DMX)
- CE approved

## LIGHT SOURCE

- RGBLA LEDs module (CRI > 85)
- Average LED lifetime: a minimum of 80% of the initial luminous flux will be maintained after approx. 50.000 hours of usage (50.000 LM80)

## PHYSICAL SIZE

- Length: 687.8 mm (27.07 in)
- Width: 252.6 mm (9.94 in)
- Height: 248 mm (7.0 in)
- Height with bracket: 535 mm (21.1 in)
- Weight: 15.5 Kg (34.2 lbs)

## CONTROL PROTOCOL AND PROGRAMMING

- USITT DMX512A
- DMX channels: 16 / 7 / 1 / Studio mode / RGB mode
- Setting, addressing, testing and measurements via LEDs display
- RDM (Remote Device Management)

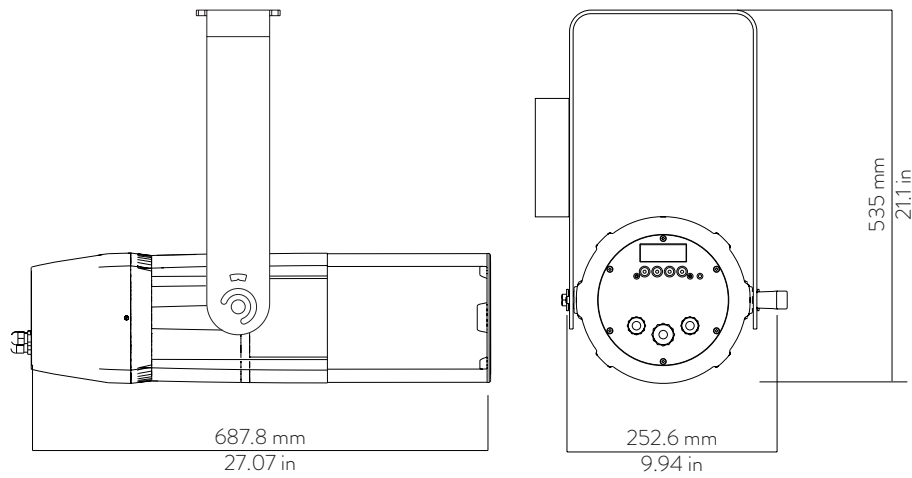
## ELECTRICAL SPECIFICATIONS AND CONNECTIONS

- AC power: 80-264 V, auto-sensing, 50/60 Hz
- Internal cable without power plug
- Max power consumption: 250 W
- Power consumption: 1.16 A at 230 V, 2.34 A at 115 V -  $\cos\phi$  0.93
- DMX data in/out: 5 pin locking XLR

## ACCESSORIES

- Optics: Zoom 17°-38°, Zoom 10°-25°

## DRAWING SIZE



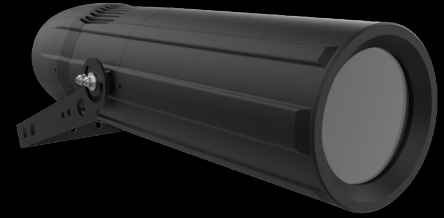
## DMX CHARTS

16 channels		7 channels		RGB mode	
1	master dimmer	1	master dimmer	1	master dimmer
2	red	2	red	2	dimmer fine
3	green	3	green	3	red
4	blue	4	blue	4	green
5	spare channel	5	spare channel	5	blue
6	lime	6	lime	6	white tone
7	amber	7	amber	7	saturation
8	strobe effect	<b>Studio mode</b>		8	strobe effect
9	dimmer fine			9	special function
10	special function			<b>1 channel</b>	
11	red tone			1	master dimmer (color temperature settable by display)
12	green tone				
13	blue tone				
14	white tone				
15	green saturation				
16	saturation				

 **LEDko EXT T / D**

## KEY FEATURES

- LED profile spot IP 65
- Tungsten or Daylight COB LED (CRI 80 - CRI 90)
- Profile zoom from 14° to 35°
- Four blade framing system and internal gobo holder
- Electronic 16 bit dimming with 3 selectable curves (Exponential, Logarithmic and Linear)
- Fan setting with 2 different options (auto, DMX)
- Guaranteed flicker-free



## SPECIFICATIONS

- Fixed white CCT: 3.200 K or 5.600 K
- IP rating: 65 (weatherproof)
- Profile zoom from 14° to 35°
- Four blade framing system, each shutter blade is adjustable for radial position and angle
- Internal gobo holder (standard gobo size B)
- Electronic 16 bit dimming with 3 selectable curves (exponential, logarithmic or linear)
- Synchronized, random or pulse electronic strobe
- Flicker-free operation with LEDs frequency controlled via DMX from 600 to 19.000 Hz
- Fan setting with 2 different options (auto, DMX)
- CE approved

## LIGHT SOURCE

- Tungsten or Daylight COB LED (CRI 80 or CRI 90)
- Average LED lifetime: a minimum of 80% of the initial luminous flux will be maintained after approx. 50.000 hours of usage (50.000 LM80)

## PHYSICAL SIZE

- Length: 687.8 mm (27.07 in)
- Width: 252.6 mm (9.94 in)
- Height: 248 mm (7.0 in)
- Height with bracket: 405 mm (15.94 in)
- Weight: 14.0 Kg (30.8 lbs)

## CONTROL PROTOCOL AND PROGRAMMING

- USITT DMX512A
- DMX channel: 5 / 1
- Setting, addressing, testing and measurements via LEDs display
- RDM (Remote Device Management)

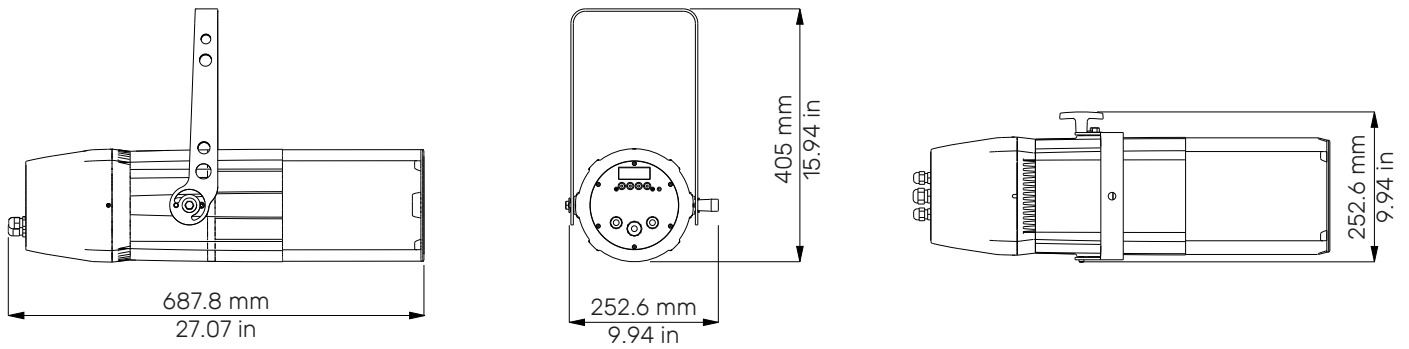
## ELECTRICAL SPECIFICATIONS AND CONNECTIONS

- AC power: 85-264 V, auto-sensing, 50/60 Hz
- Internal cable without power plug
- Max power consumption: 200 W
- Power consumption: 0.92 A at 230 V, 1.83 A at 115 V -  $\cos\phi$  0,95
- DMX data in/out: 5 pin locking XLR

## ACCESSORIES

- Optics: Zoom 14°-35°, Zoom 10°-25°

## DRAWING SIZE



## DMX CHARTS

5 channels	
1	master dimmer
2	spare channel
3	dimmer fine
4	strobe effect
5	special function

1 channel	
1	master dimmer

## PHOTOMETRIC DATA

The LEDko EXT Photometric Data may be downloaded from [www.coemar.com](http://www.coemar.com).