

CLM-5 & Accessories



CLM-5 (Basic Set)
K2.0006361



CLM-5 Motor Unit
K2.0006360



CLM-5/cforce mini Clamp Console 19/15mm,
K2.0006176



CLM-5/cforce mini Gear m0.8/32p, 40t,
K2.0003753



CLM-5 Motor Cable,
K2.0006332

CLM-5 / cforce mini Accessories



CLM-5/cforce mini Clamp Console 19/15mm,
K2.0006176



CLM-5/cforce mini Clamp Insert 19/15mm (incl. in K2.0006176)
K2.0006175



CLM-5/cforce mini Gear m0.8/32p, 40t,
K2.0003753
CLM-5/cforce mini Gear m0.8, 40t, 25 mm,
K2.0006372
CLM-5/cforce mini Gear m0.4/64p, 80t,
K2.0006367
CLM-5/cforce mini Gear m0.5, 64t,
K2.0006365
CLM-5/cforce mini Gear m0.6, 56t,
K2.0006363
CLM-5/cforce mini Gear 48p, 60t,
K2.0006370

CLM-4 & Accessories



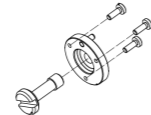
Controlled Lens Motor CLM-4 (Set)
K0.60185.0



Standard Clamp Console for CLM-3
K2.65140.0



19 mm to 15 mm insert for CLM-4,
K2.0002080



Gear Flange for CLM-4
K2.0000244

CLM-4 Gear assembly with modul 0.8/32 pitch, 50 teeth (incl. metal gear Flange),
K2.72108.0

CLM-4 Gear assembly with modul 0.8/32 pitch, 50 teeth, 25mm extra wide
K2.72112.0



CLM-4 Motor Unit
K2.72114.0



Cable for CLM-4 Motor,
K2.72099.0



CLM-4 Gear Set 0.8, 0.6, 0.5, 0.4,
K2.72116.0 (incl. one metal core)



Standard Clamp Console for CLM-4
K2.72101.0



Clamp Console-2 for CLM-3
K2.65141.0



CLM-4 Clamp Insert 5/8"
K2.72115.0

CLM-4 / cforce plus Accessories



CLM-4 Rod-to-Rod Adapter 15mm,
K2.72106.0



CLM-4 Rod-to-Rod Bridge Adapter 15mm,
K2.72107.0



CLM-4 Rosette Adapter for Hill Bracket,
K2.72113.0



CLM-4, cforce plus Gear Screw,
K2.72127.0

CLM-4 Gear assembly with modul 0.6, 70 teeth,
K2.72111.0

CLM-4 Gear assembly with 48 pitch, 75 teeth,
K2.0002044

CLM-4 Gear assembly with module 0.5, 80 teeth,
K2.72110.0

CLM-4 Gear assembly with module 0.4/64 pitch, 100 teeth,
K2.72109.0

CLM-3 & Accessories



Controlled Lens Motor CLM-3 (Set)
K0.60057.0



Clamp Console-2 for CLM-3
K2.65141.0



CLM-3 gear module 0.8/32 pitch, 60 teeth,
K2.65142.0

CLM-3 gear module, 0.8/32 pitch, 60 teeth, 25mm extra-wide,
K2.0001256

CLM-3 gear module 0.6, 84 teeth,
K2.0001918

CLM-3 gear module with 48 pitch, 90 teeth,
K2.0002055

CLM-3 gear module 0.5, 96 teeth,
K2.0001914

CLM-3 gear module 0.4/64 pitch, 120 teeth,
K2.000001911



CLM-3 Motor Unit
K2.65143.0



Cable for CLM-3 Motor,
K2.65145.0



Gear for Cine Lenses Module 0.8, 60 teeth for CLM-3,
K2.65142.0



Standard Clamp Console for CLM-3
K2.65140.0



19 mm to 15 mm inserts for CLM-3 (pair),
K2.0002077

LDE-1 Lens Data Encoder



Lens Data Encoder LDE-1,
K2.0002680



LDE-1 Cable
K2.0003040



LDE-1 Gear m0.8/32p, 60t,
K2.0003036
For standard cine lenses focus/iris/zoom, Panavision focus only.

LDE-1 Gear m0.4/64p, 120t,
K2.0003050
For Panavision iris, Fujinon ENG iris, Canon ENG iris.

LDE-1 Gear 48p, 90t,
K2.0003050
For Panavision zoom.

Lens Type	Focus Gear	Iris Gear	Zoom Gear
CINE	Module 0.8 / 32 pitch	Module 0.8 / 32 pitch	Module 0.8 / 32 pitch
Panavision	Module 0.8 / 32 pitch	Module 0.4 / 64 pitch	48 pitch (no common pitch equivalent)
Fujifilm B4 ENG	Module 0.6 (no common pitch equivalent)	Module 0.4 / 64 pitch	Module 0.6 (no common pitch equivalent)
Canon B4 ENG	Module 0.5 (no common pitch equivalent)	Module 0.4 / 64 pitch	Module 0.5 (no common pitch equivalent)