

## Configuration Overview | 1.4.0 / 2020.01

### ALEXA Mini LF



**ALEXA Mini LF Ready to Shoot Set V**, K0.0024313  
**ALEXA Mini LF Ready to Shoot Set Gold**, K0.0024312  
 includes:

- K1.0024074 1x ALEXA Mini LF camera body
- K2.0018983 1x ARRI LPL Mount ALEXA Mini/AMIRA
- K2.0016936 1x ARRI PL to LPL Adapter
- K2.0024130 2x Codex Compact Drive 1TB ALEXA Media
- K2.0020916 1x ALEXA Mini LF Multi Viewfinder MVF-2
- K2.0023915 1x Cable VF (0.35m/1.15ft)
- K2.0023943 1x Cable VF (0.5m/1.5ft)
- K2.0023839 1x Mini Adapter Plate MAP-2A
- K2.0006140 1x Mini Viewfinder Bracket MVB-1
- K2.73002.0 1x Center Camera Handle CCH-2
- K2.0023546 1x Mini Side Bracket MSB-3
- K2.0014957 1x Mini Side Bracket MSB-2
- K2.0014894 1x Compact Bridge Plate CBP-1 19mm
- K2.0013937 1x Rear Accessory Bracket RAB-1
- K2.0023406 1x RAB-1 Clamp 2
- K2.0006186 1x Rod Mounting Bracket RMB-3
- K2.66255.0 1x 15mm Reduction Insert
- K2.0015896 1x Bottom Dovetail Plate 300mm/12in
- K2.75007.0 1x AMIRA Power Cable Straight 2m/6.6in KC-50
- Set V:** K2.0014530 1x V-mount Power Splitting Box MkII
- Set G:** K2.0014532 1x Gold Mount Power Splitting Box Mk II

OR

for further sets please see current price list

**Antenna Video/ECS**, K2.0014568



### ALEXA Mini LF Viewfinder

**ALEXA Mini LF MVF-2 Set**

- K0.0024311, includes:
- K2.0020916 1x ALEXA Mini LF Multi Viewfinder MVF-2
  - K2.0023915 1x Cable VF (0.35m/1.15ft)
  - K2.0023943 1x Cable VF (0.5m/1.5ft)



**Heated Eycup, HE-7**  
 K2.0003898 (below 0°C)

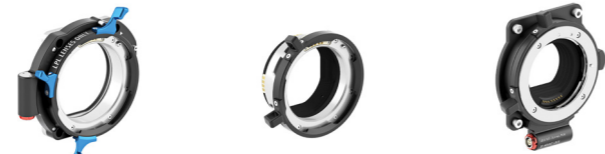
- Cable VF (0.35m/1.15ft)**, K2.0023915
- Cable VF (0.5m/1.5ft)**, K2.0023943
- Cable VF (2m/6.5ft)**, K2.0023944
- Cable VF (10m/33ft)**, K2.0023945

### ALEXA Mini LF Media and Readers



For details regarding Recording Medias please see Configuration Overview 1.9.0

### Lens Mounts and Adapter



**ARRI LPL Mount ALEXA Mini/AMIRA**  
 K2.0018983

**ARRI PL to LPL Adapter**  
 K2.0016936

**EF Mount (LBUS)**  
 K2.0019965

### Wireless Video System

**Complete Wireless Video Pro Set**, KK.0024404  
 includes:

- K2.0014051 1x Wireless Video Transmitter WVT-1 device
- K2.0014053 1x Wireless Video Receiver WVR-1 device
- K2.0022606 1x Wireless Video Receiver small WVR-1s device
- K2.0014331 1x Cable PWR OUT/12V (2p) - RS/PWR IN (3p) (0.5m/1.6ft)
- K2.0001637 1x Cable RS - RS/PWR IN (0.5m/1.6ft)
- K2.0002668 1x Cable D-Tap - RS/PWR IN (0.5m/1.6ft)
- K2.0001967 1x L-Bracket
- K2.0014991 1x HDTV BNC Cable (0.3m/1ft)
- K2.0014323 1x Multi Interface Adapter MIA-1
- K2.0014893 2x 3/8in Thread Adapter
- K2.0014774 1x Receiver Power Supply RPS-1
- K2.0015006 1x Wireless Video System Case
- K2.0014568 7x Antenna Video/WiFi/ECS
- K2.0014216 1x USB Cable WVS
- K2.0024039 1x USB Micro Cable WVS



### Electronic Accessories

**Transvideo Starlite HD5-ARRI 5" OLED Monitor** K2.0006960

- Starlite HD5 ARRI Ext cable angled**, K2.0008662
- Starlite HD5 ARRI Ext cable straight**, K2.0008663

**EXT Distribution Box 2 (EDB-2) for ALEXA Mini**  
 K2.0013145

**ALEXA Mini EXT to EXT cable 1,5m (59 inch)**  
 K2.0009051

**General Purpose IO Box GPB-1**, K2.0007642 (cable incl.)

**GPB-1 Mounting Bracket**, K2.0008533  
 (clamp console CLM-5/c-force K2.0006176 NOT incl.)

**Cable ALEXA Mini/AMIRA EXT to GPB-1**, K2.0007736

### Splitting Boxes and Adapter Plates



**B-Mount Adapter Plate**  
 K2.0024113



**B-Mount Power Splitting Box**, K2.0024114



**Amicro Power Splitting Box**, K2.0024115



**Vmicro Power Splitting Box**  
 K2.0024116



**V-mount Power Splitting Box MkII**, K2.0014530



**V-Mount Adapter Plate Mk II for ALEXA Mini**, K2.0014531



**Gold Mount Power Splitting Box Mk II**, K2.0014532



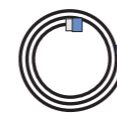
**Gold Mount Adapter Plate Mk II for ALEXA Mini**, K2.0014533



**V-mount battery plate with hot-swap buffer**, K2.0015840



**Gold-mount battery plate with hot-swap buffer**, K2.0015859



- Power Cable Smart APU to ALEXA Mini 6' (1.85m)**, K2.0015861
- Power Cable Smart APU to ALEXA Mini 2.6' (0.80m)**, K2.0015862
- Power Cable Smart APU to ALEXA Mini (0.25m)**, K2.0015863

no pic available yet

**Top support rod bracket 15mm LWS**  
 K2.0015865

### Cables & Power Supply

**ARRI Power Supply Light 24V** K2.0034493

**Power Cable Straight KC-50 (2m, 6.6 feet)**, K2.75007.0  
**Power Cable Coiled**, K2.0001275

- Ethernet Cable 3m KC 153-S**, K2.72021.0
- ALEXA Mini LF Audio connector with cable**, K2.0023988
- ALEXA Mini EXT to LCS**, K2.0007624
- ALEXA Mini EXT to EXT cable 1,5m (59 inch)**, K2.0009051

**EXT-RS Adapter**, K2.0006170



### Electronic Control System

**cforce Set for ALEXA Mini/ALEXA Mini LF, Imperial Scale:**

- K0.0010098, includes:
- K2.72103.0 1x Wireless Compact Unit WCU-4
  - K2.0001652 1x Pre-Marked Focus Ring 8 inch for WCU-4
  - K2.72133.0 1x Pre-Marked Focus Ring 12 inch for WCU-4
  - K2.72134.0 1x Pre-Marked Focus Ring 14 inch for WCU-4
  - K2.72135.0 1x Pre-Marked Focus Ring 20 inch for WCU-4
  - K2.72136.0 1x Pre-Marked Focus Ring 3'6 for WCU-4
  - K2.72117.0 1x Plain White Focus Ring for WCU-4 or SXU-1
  - K2.0006501 1x WCU-4 Plate
  - K2.0008271 1x WCU-4 Monitor Bracket
  - K2.47851.0 3x NP-FM500H Battery (Sony)
  - K2.0002065 1x BC-QM1 Battery Charger (Sony)
  - K2.0006355 1x cforce mini (Basic Set)
  - K2.0006750 2x Cable LBUS 0.3m/1ft
  - K2.72146.0 1x Carrying Case for WCU-4 and Accessories

**cforce Set for ALEXA Mini/ALEXA Mini LF, Metric Scale:**  
 K0.0010101, includes:

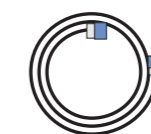
- K2.72103.0 1x Wireless Compact Unit WCU-4
- K2.0001651 1x Pre-Marked Focus Ring 0.20m for WCU-4
- K2.72129.0 1x Pre-Marked Focus Ring 0.25m for WCU-4
- K2.72130.0 1x Pre-Marked Focus Ring 0.35m for WCU-4
- K2.72131.0 1x Pre-Marked Focus Ring 0.50m for WCU-4
- K2.72132.0 1x Pre-Marked Focus Ring 1.00m for WCU-4
- K2.72117.0 1x Plain White Focus Ring for WCU-4 or SXU-1
- K2.0006501 1x WCU-4 Plate
- K2.0008271 1x WCU-4 Monitor Bracket
- K2.47851.0 3x NP-FM500H Battery (Sony)
- K2.0002065 1x BC-QM1 Battery Charger (Sony)
- K2.0006355 1x cforce mini (Basic Set)
- K2.0006750 2x Cable LBUS 0.3m/1ft
- K2.72146.0 1x Carrying Case for WCU-4 and Accessories



**Ultrasonic Distance Measure UDM-1 Set**  
 K0.60055.0



**LCUBE CUB-1**, K0.0010104  
 LBUS cables need to be ordered separately



- LBUS 0.2m/8"**, K2.0006749
- LBUS 0.3m/1ft**, K2.0006750
- LBUS 0.5m/1.5ft**, K2.0006751
- LBUS 0.8m/2.5ft**, K2.0006752
- LBUS 1.5m/5ft**, K2.0006753
- LBUS 3m/10ft**, K2.0006754
- LBUS 6m/20ft**, K2.0006755
- LBUS 15m/49ft**, K2.0006756
- Cable LBUS to D-Tap 1.2m/4ft**, K2.0006757
- Cable LBUS to D-Tap 0.8m/2.5ft**, K2.0006758
- Cable LBUS to RS 0.8m/2.5ft**, K2.0006759
- Cable LBUS to XLR-4 0.8m/2.5ft**, K2.0006760