



Roller Plate

The smallest dolly solution Panther Broadcast has to offer. A winner in any tricky transport situation. This aluminium base is utmost stable and if it would be too small in a special situation you just double its surface by adding a second roller plate. Made for track and ground the roller plate offers various mounts to accept seat, ball adapter, Euromount etc.

Der kleinste Panther Broadcast Dolly, unübertroffen praktisch, wenn die Transportkapazität begrenzt ist. Die Aluminiumplattform ist äußerst stabil und kann bei Bedarf mit einer zweiten Roller Plate verdoppelt werden. Für Schiene und Studioboden gleichermaßen geeignet, bietet die Roller Plate diverse Aufnahmemöglichkeiten für Sitz, Kugelschale, Euromount etc.

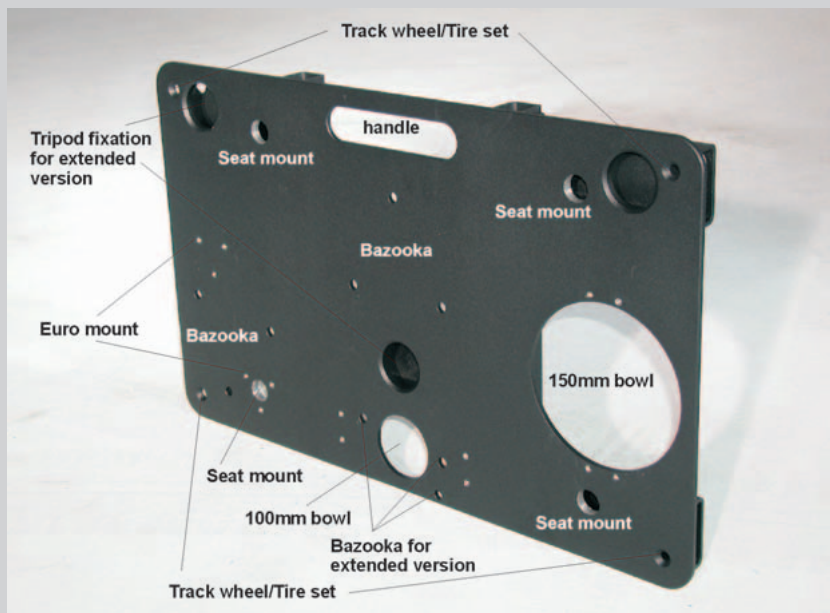
Technical Data:

Weight: 7 kg / 15 lb

Payload: 250 kg / 550 lb

Size: 68x42x4cm / 26x16x2inch

Size doubled: 68x84x4cm / 26x32x2 inch



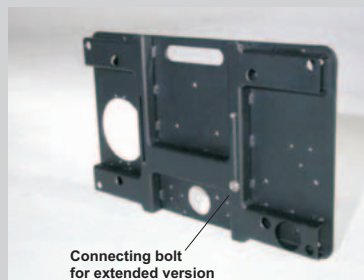
The Pixy crane or any tripod can be placed into three fixation spots of two connected platforms



Track gauge / Schienenspur: 62 cm (2'1'')



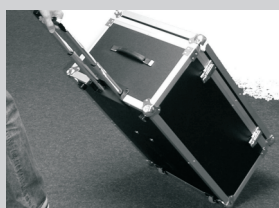
Roller Plate with air-tire and steering-shaft (can be used with a single platform, too)



Connect two Roller Plates without tools



Track gauge / Schienenspur: 36cm (1'2'')



Case to carry 1 or 2 Roller Plates with accessories



Accessories-box separate or connected to Roller Plate

