

cforce mini



cforce mini Motor Unit
K2.0006354



CLM-5/cforce mini Clamp Console 19/15mm,
K2.0006176

cforce mini (Basic Set)
K2.0006355



LBUS cables need to be ordered separately



- LBUS 0.2m/8", K2.0006749
- LBUS 0.3m/1ft, K2.0006750
- LBUS 0.5m/1.5ft, K2.0006751
- LBUS 0.8m/2.5ft, K2.0006752
- LBUS 1.5m/5ft, K2.0006753
- LBUS 3m/10ft, K2.0006754
- LBUS 6m/20ft, K2.0006755
- LBUS 15m/49ft, K2.0006756
- LBUS to LCS, K2.0007318

cforce plus



no picture yet

cforce plus Motor Unit
K2.0008819

no picture yet

cforce plus Clamp Console 19/15 mm,
K2.0008678

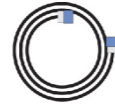


cforce plus Gear m0.8/32p, 60t,
K2.0009335

cforce plus (Basic Set)
K0.0010103



LBUS cables need to be ordered separately



- LBUS 0.2m/8", K2.0006749
- LBUS 0.3m/1ft, K2.0006750
- LBUS 0.5m/1.5ft, K2.0006751
- LBUS 0.8m/2.5ft, K2.0006752
- LBUS 1.5m/5ft, K2.0006753
- LBUS 3m/10ft, K2.0006754
- LBUS 6m/20ft, K2.0006755
- LBUS 15m/49ft, K2.0006756
- LBUS to LCS, K2.0007318

cforce mini RF



cforce mini RF Basic Set,
KK.0016804



LBUS cables need to be ordered separately



cforce mini RF Motor Unit
K2.0016802



CLM-5/cforce mini Clamp Console 19/15mm,
K2.0006176



CLM-5/cforce mini Clamp Insert 19/15mm,
K2.0006175



CLM-5/cforce mini Gear m0.8/32p, 40t,
K2.0003753

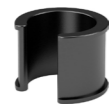


Outdoor Antenna, straight, for UMC-4 Motor Controller,
K2.0002007

cforce mini / CLM-5 Accessories



CLM-5/cforce mini Clamp Console 19/15mm,
K2.0006176



CLM-5/cforce mini Clamp Insert 19/15mm (incl. in
K2.0006176) K2.0006175



- CLM-5/cforce mini Gear m0.8/32p, 40t, K2.0003753
- CLM-5/cforce mini Gear m0.8, 40t, 25 mm, K2.0006367
- CLM-5/cforce mini Gear m0.4/64p, 80t, K2.0006367
- CLM-5/cforce mini Gear m0.5, 64t, K2.0006365
- CLM-5/cforce mini Gear m0.6, 56t, K2.0006363
- CLM-5/cforce mini Gear 48p, 60t, K2.0006370

cforce plus / CLM-4 Accessories



CLM-4 Rod-to-Rod Adapter 15mm,
K2.72106.0



CLM-4 Rod-to-Rod Bridge Adapter 15mm,
K2.72107.0



CLM-4 Rosette Adapter for Hill Bracket,
K2.72113.0



Gear Screw for CLM-4
K2.72127.0



CLM-4/cforce plus Gear assembly with modul 0.6, 70 teeth,
K2.72111.0

CLM-4/cforce plus Gear assembly with 48 pitch, 75 teeth,
K2.0002044

CLM-4/cforce plus Gear assembly with module 0.5, 80 teeth,
K2.72110.0

CLM-4/cforce plus Gear assembly with module 0.4/64 pitch, 100 teeth,
K2.72109.0

- Cable LBUS (straight) to LBUS (straight) Length: 0.2m/8", K2.0006749
- Cable LBUS (straight) to LBUS (straight) Length: 0.3m/1ft, K2.0006750
- Cable LBUS (straight) to LBUS (straight) Length: 0.5m/1.5ft, K2.0006751
- Cable LBUS (straight) to LBUS (straight) Length: 0.8m/2.5ft, K2.0006752
- Cable LBUS (straight) to LBUS (straight) Length: 1.5m/5ft, K2.0006753
- Cable LBUS (straight) to LBUS (straight) Length: 3m/10ft, K2.0006754
- Cable LBUS (straight) to LBUS (straight) Length: 6m/20ft, K2.0006755
- Cable LBUS (straight) to LBUS (straight) Length: 15m/49ft, K2.0006756
- Cable LBUS (straight) to LBUS (straight) Length: to LCS, K2.0007318
- Cable LBUS (angled) to LBUS (straight) Length: 0.35m/1.1ft, K2.0013042
- Cable LBUS (angled) to LBUS (straight) Length: 0.80m/2.6ft, K2.0013043
- Cable LBUS (angled) to LBUS (straight) Length: 1m/3.3ft, K2.0013041
- Cable LBUS (angled) to LBUS (angled) Length: 0.2m/8", K2.0012785
- Cable LBUS (angled) to LBUS (angled) Length: 0.6m/2ft, K2.0013040
- Cable LBUS (angled) to LBUS (angled) Length: 0.8m/2.6ft, K2.0012630

Cable LBUS Star (0.2m/8in). K2.0023823



- Cable CAM (7p) – RS (0.3m/1ft), K2.0015754
- Cable CAM (7p) – EXT (16p) (0.8m/2.6ft), K2.0015755
- Cable CAM (7p) – EXT (6p) (0.6m/2ft), K2.015756
- Cable CAM (7p) – LANC/D-Tap (0.6m/2ft), K2.0015757
- Cable CAM (7p) – RED CTRL/D-Tap (0.6m/2ft), K2.0015758
- Cable CAM (7p) – ENG (12p) (0.3m/1ft), K2.0015759
- Cable CAM (7p) – LBUS (0.5m/1.6ft), K2.0015760
- Cable CAM (7p) – Sony F55 CTRL/D-Tap (0.6m/2ft), K2.018814
- Cable CAM (7p) – D-Tap (0.5m/1.6ft), K2.018813
- Cable CAM (7p, f) – CAM (7p, m), (0.3m/1ft), K2.0023832
- Cable CAM (7p) – LBUS (0.3m/1ft), (0.3m/1ft), K2.0025027

Lens Type	Focus Gear	Iris Gear	Zoom Gear
CINE	Module 0.8 / 32 pitch	Module 0.8 / 32 pitch	Module 0.8 / 32 pitch
Panavision	Module 0.8 / 32 pitch	Module 0.4 / 64 pitch	48 pitch (no common pitch equivalent)
Fujifilm B4 ENG	Module 0.6 (no common pitch equivalent)	Module 0.4 / 64 pitch	Modul 0.6 (no common pitch equivalent)
Canon B4 ENG	Module 0.5 (no common pitch equivalent)	Module 0.4 / 64 pitch	Modul 0.5 (no common pitch equivalent)